

dedolight®

PRECISION LIGHTING INSTRUMENTS



NEWS 2019

ENGLISH 04/2019



My name is Dedo.

I am a cameraman/Director of Photography.

I've shot documentaries, commercials, art films, features and theatre plays in over forty countries. I am also a high-speed specialist (film and video). Today, dedolight is widely known and acclaimed for precision lighting instruments.

I am very proud of my unique team at dedolight.

No manufacturer in our field has as many experienced, recognized and practicing Directors of Photography in the Team as we do.

We listen to and enjoy the dialogue with some of the best known cinematographers shooting multi-million dollar blockbusters as well as the intensely creative small crews who shoot under street fighter conditions. Many ideas and constructive criticism comes from these colleagues.

Our research and development is done "in-house" and I am very proud of our exceptional team of optical engineers, electronic geniuses, computer gurus and seasoned high class mechanical engineers. We collaborate with several light source manufacturers and continue to develop better, more efficient and precise light sources. We combine leading edge optical design (over 30 patents) with the most modern fixture and ballast concepts. We remain committed to create the best possible tools and control devices in precision lighting for the professional.

We are proud to introduce the latest marriage of prime class LED technology with our patented double aspherical dedolight optics and LED panel soft lights.

dedolight provides the highest optical precision and unique tools for light control and light shaping. These are available in an eco-friendly halogen version, new tungsten metal halide – interchangeable with our daylight metal halide sources and several versions of the best LED technologies in the dedocolor® quality! We value the extraordinary team of dedolight agents around the world. Many share common roots in the practicing profession and an enthusiasm and dedication to the art of lighting.

LED BREAKTHROUGH

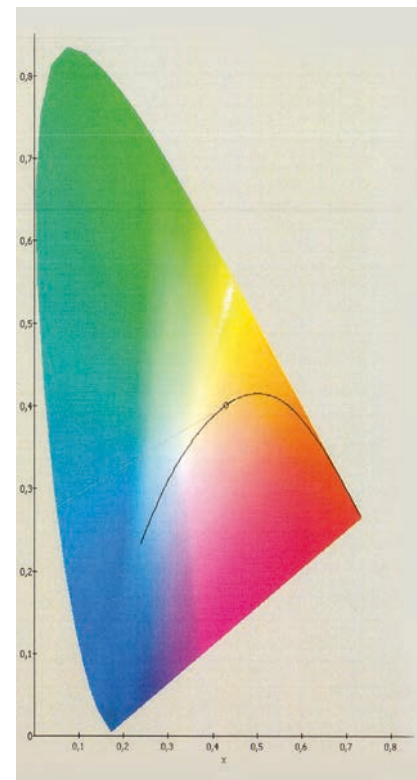
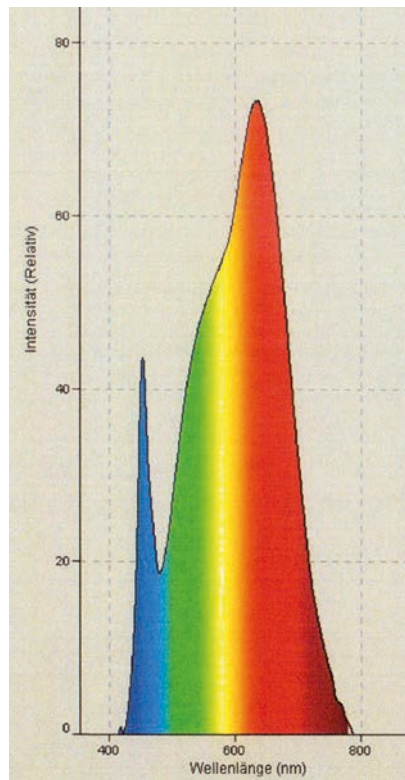
Digital cameras see LED light differently than tungsten/daylight sources meaning they interpret light sources differently. Color temperature meters are unable to see the full spectrum and therefore do not work for the evaluation of LED light.

Samples are only taken in three or four places of the spectrum. Spectrum analysis and CRI values offer a serious step for evaluation, but usually do not include colors such as R9 (red) and R13 (skin tone) - both extremely critical values.

Even expanded CRI evaluations do not offer reliable criteria. TLCI (Television Lighting Consistency Index), the new standard of the European Broadcasting Union (EBU), offers a better and more reliable base for the way studio cameras see LED light.

These studio cameras usually work with three CCD sensors. Thus, the results are not really indicative of the way different CMOS cameras see LED color.

For a number of years we have been conducting tests with various digital cameras and different skin tones. In these tests we light one side of the Face with a reference light and the other with LED light. Our LED lights show a perfect match between reference light and our LED lights as seen by the vast majority of CMOS cameras.



Spectral distribution (left) and color coordinates show that our DLED4 bicolor light (in tungsten function) is perfectly placed on the Planck Curve (right).

CRI Ra (1-8)	97	TLCI 97
CRI Ra' (1-14)	96	
CCT	3112K	

R1	R2	R3	R4	R5	R6	R7	R8
98	98	95	97	96	95	98	96

R9	R10	R11	R12	R13	R14	R15
89	92	96	95	98	96	89

Measurements with our 40W DLED4 bicolor light in tungsten function
Expanded CRI evaluation: 15 colors

NEW:

FELLONI3

Vastly improved color, same as previous dedocolor quality

Available as bicolor high output, as daylight high output and as bicolor standard output

TURBO FELLONI

Only available in high output bicolor version

Light output 5 x higher than previous Felloni panel, also here optimum color quality

Further and more detailed informations are to be found in a separate Felloni brochure including all possible accessories, power options and packaging. In this catalog, Fellois are to be found in combination kit with other focusing lights. See pages 18 and 19.

Focusing LED lights present special challenges regarding color distribution.

Specially developed LED light sources in combination with our patented double-aspheric technology (recognized by the Oscar committee for Technical Achievement) have allowed us to provide five different dedolight DLED focusing LED light fixtures.

All deliver perfect light distribution, the widest focusing range in the industry and allow the use of our unique line of light shaping accessories. Available in daylight, tungsten and bicolor. Bicolor is variable from 2700K to 6500K

The following DLED focusing lights work with passive cooling (no fan - no noise).
Ledzilla 8 W, DLED2 20W, DLED4 40W, DLED9 90W

Active cooling is used on DLED12 (2500W) as well as DLED30 (300W).

Also again in super quiet function on the new Turbo light generation, which is described in a separate catalog. DLED3, DLED7, DLED10.

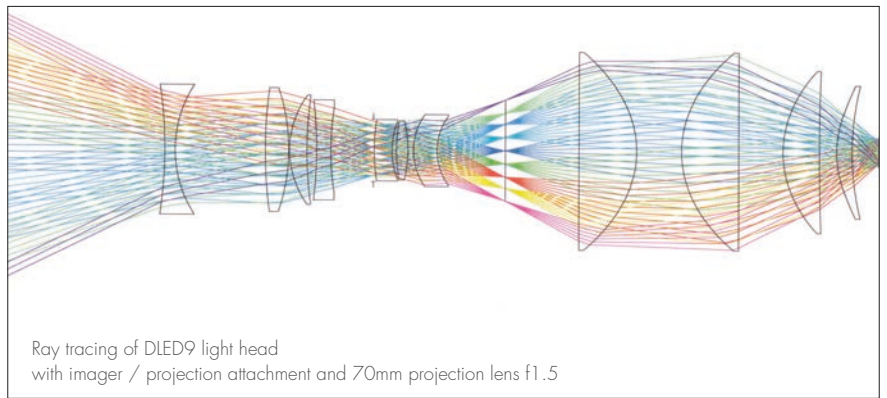
Health hazards

In the past, metal halide lamps have been known to cause skin cancer and cataracts due to the short wave-length ultraviolet rays.

We have always offered the lowest and safest UV value in the industry.

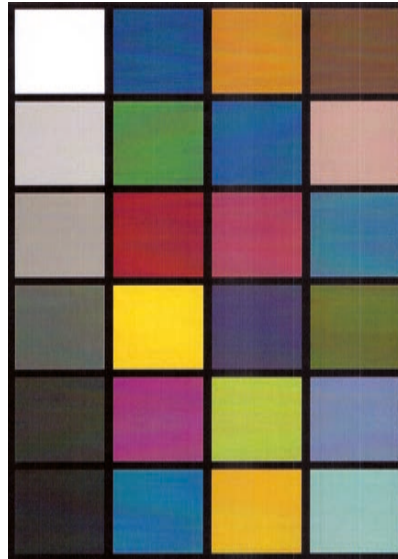
LED light sources can create a health hazard by their unavoidable blue peak.

Our products comply with the requirements of biohazard standard EN6247 in the category of "exempt" (without any health hazard criteria).



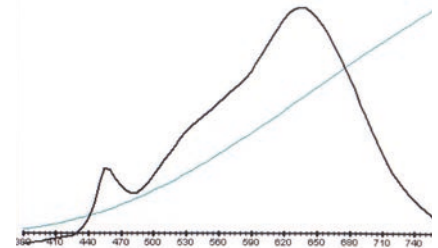
Ray tracing of DLED9 light head with imager / projection attachment and 70mm projection lens f1.5

DLED-BI measured in the lowest tungsten color temperature 2629K. TLCI 97



Television Lighting Consistency Index - 2012

Sector	Lightness	Chroma	Hue
R	0	0	0
R/Y	0	0	0
Y	0	0	0
Y/G	0	0	0
G	0	0	0
G/C	0	0	0
C	0	0	0
C/B	0	0	-
B	0	-	0
B/M	0	0	+
M	0	+	+
M/R	0	0	0

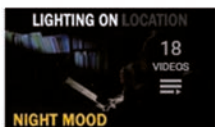


The spectral curve shows that we have managed to avoid the deep valley next to the blue peak. This offers optimum security regarding photo-biological hazard. The table above also shows that this light does not need any correction in post-production.

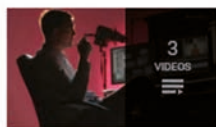


<http://www.youtube.com/user/dedoweigertfilm>

- EASY LIGHTING FOR THE SMALL TEAM - tutorial videos
- LEARN LIGHTING FROM THE MASTERS - tutorial videos
- DEDOLIGHT LIGHTING INSTRUMENTS & TOOLS - videos about our unique products
- DEDOLIGHT IN PHOTOGRAPHY - photo shootings and interviews made with dedolight
- INTERVIEWS / BEHIND THE SCENES - learn more about how professionals use our products and a lot more...



Easy lighting for the small team



Learn lighting from the Masters



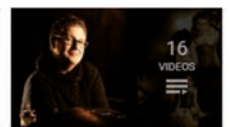
dedolight: Lighting instruments & tools



dedolight in photography



dedolight: Instructional videos



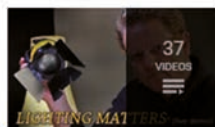
Q&A - interviews with cinematographers & ...



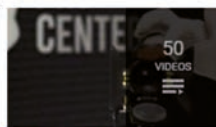
International dedolight Competition 2015 - Results ...



Behind the scenes



Trade fair interviews & dedolight workshops around the world



Collection of international dedolight videos



Sammlung von deutschsprachigen dedolights ...



Dedo about filmmaking

COMPLETE RANGE OF FOCUSING DEDOLIGHT LED FIXTURES

8 DIFFERENT SIZES:

All share the following characteristics:

- LED light sources, specially developed for dedolight. Latest technology. Highest dedocolor quality
- Patented dedolight aspherical optics
- The astounding efficiency is an enormous advantage in mobile use which makes battery operation possible up to the DLED9 (90W light head).



- Unprecedented focus range (wider/narrower)
- A clean beam concept, only offered by dedolight. The precision controlled light beam offers perfectly smooth light distribution within the beam – outside with any stray light.
- The DLED9 and DLED12 lights, mainly conceived for studio operation. DLED9 lights also ideal for mobile teams.
- Our new LED turbo series works with active in an extremely low noise variation. Drastically enhanced light output: DLED3, DLED7 and also our new flagship light for mobile drama, the DLED 10 – accompanied by the super power studio version DLED30. See separate Turbo catalog and flyers for DLED10 and DLED30
- All of these lights share exceptional light shaping control:
 - Precise barn door shadows.
 - Scrim, double, full, half and graduated.
 - Graduated grey glass filters (only from dedolight)
 - Non-spherical, wide-angle attachments with rotating barn doors (dedolight patent)
 - dedolight imager/projection attachment
 - Razor-sharp light and shadow forms
 - Smooth light and shadow edges with DPEYE filters (soft edge, no diffusion)
 - Gobo projection and slide projection
 - Projection of background effect filters

With the exception of the 8 W Ledzilla and the DLED2 (20 W), all of these lights are available for mobile use as well as studio versions.

The studio versions are offered as an option with pole operation and/or DMX control.

The DLED12 has DMX control as standard.

For mobile use, great advantage is offered by our bicolor lights, allowing continuous change of color temperature from 2700 K up to 6500 K.

Our on-board Ledzilla light is also often used as off-board light for complete scenic lighting. Ledzilla and our larger DLED lights are not only offered in tungsten, daylight and bicolor variations, but also in several infrared and ultra-violet versions.

LED



YOUR DREAM - OUR FOCUSING

Complete Range in 5 different sizes

- * Patented aspherics² dedolight Optics
- * Unprecedented Focusing
- * Astounding Light Efficiency

OUR LED

TECPRO FELLONI 3

- Higher light output
- Perfect color
- 3 Versions:
 - bicolor
 - daylight high output
 - bicolor high output



LED LIGHTS



LED LIGHTS

and systems for on-board, off-board, mobile, studio & special effects.

- * Perfectly Even Light Distribution
- * Perfect color (Tungsten, Daylight, Bicolor)
- * Complete Range of Light Shaping Control Tools

PANEL LIGHTS

Tecpro Felloni Turbo, maxi power

- bicolor
- super output (5x)

Many other LED panel options include:

- Ledrama – highest output, reach and efficiency (page 34)
- Big Foot, huge bicolor and multicolor systems*
- Ledraptor 3 LED soft lights, 3, 5 and 7 ft diameter*



**see separate brochures*

DLED2 LED SMALL, POWERFUL, VERSATILE

dedolight Patented Aspheric Optics in combination with specially developed LED light sources in daylight and bicolor variations. For use as on-board or off-board light, multi-functional and versatile as tiny interview and documentary lighting, for accents and special effects. Especially useful and versatile in combination with FELLONI bicolor multi-LED panels.



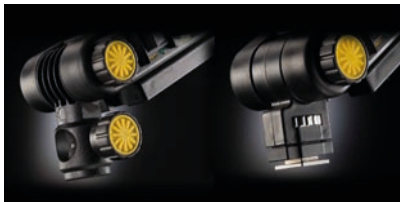
DLED2-D

Monocolor. Continuous dimming with no color shift, with integrated electronics and 16 mm (5/8") stand fitting.

DLED2-BI

Same as image (A), but in bicolor version.

Continuous dimming with no color shift. Color temperature range 2700K - 6500K. One of the knobs serves for dimming, the other one for continuous change of color temperature.



DLED2HSM-D

DLED2HSM-BI

Similar to A, but with camera shoe mount for camera mounting

Note: This version can be mounted directly on the camera (hot shoe) or with adapter DLBSAJSF used on stands with 5/8" stud.

Mount Change



Camera shoe mount can be exchanged by the user to stand fitting and vice versa, as shown above.



Battery Holder Plates



DLED2-BS

Battery holder for DLED2-D/-BI. Accepts NP-F950/960/970 batteries (7.2V/47Wh)



DLED2-BSU

Battery holder for DLED2-D/-BI. Accepts Sony BPU-60 battery (14.4V/56Wh)



DLED2-BP

Battery holder for DLED2-D/-BI. Accepts CGA batteries (7.2V)



example with optional NP-F950 battery attached to DLED2 light head.

Focusing 20W LED daylight and bicolor light head with yoke and 16 mm (5/8") receptacle or with yoke and camera shoe mount. Separate DT2-BAT, DT2-BI-BAT, or DT2-BI-BAT-DMX electronics needed.



DLED2Y-D

DLED2Y-BI

separate light head for use with ballasts
(ballasts shown below)



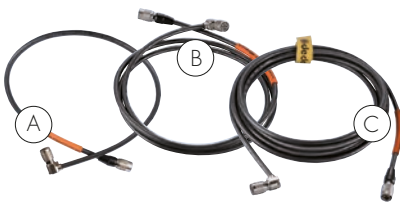
DLED2YHSM-D

DLED2YHSM-BI

with camera shoe mount

Cable to light head

three sizes of connecting (yoke versions)



A DLED2POW0.55

Connecting cable to light head, 2' (55 cm) long

B DLED2POW1.4

Connecting cable to light head, 5' (140 cm) long

C DLED2POW3

Connecting cable to light head, 10' (300 cm) long

DC Ballasts

DT2-BAT



Dimmable monochrome ballast for DLED2Y-D/T and DLED2YHSM-D/T. Dimming with no color change. Input: 6-18V DC

DT2-BI-BAT



Dimmable bicolor ballast for DLED2Y-BI and DLED2YHSM-BI. Dimming and continuous change of color temperature from 2700 to 6500K. Input: 6-18V DC

DT2-BI-BAT-DMX



DC electronics for DLED2Y-BI and DLED2YHSM-BI with DMX control for continuous change of color temperature from daylight to tungsten.

DC Input Cables

for DC Ballasts

DDCC-XLR



Coiled cable 65 cm - 1.30 m (25-51") with 4-pin XLR connector

DDCC-CAR



1.8 m (6 ft.) with cigarette light connector

DDCC-DTAPS



28 cm (11") with D-Tap connector

DDCC-DTAPL



55 cm (22") with D-Tap connector



DS-95SI battery, 95 Wh

- V-lock mount
- 14.8V 95Wh
- Max. discharge rate up to 10A
- Input voltage for charger 90V - 240V (Including charge cable. Specify power plug needed for your country.)
- Integrated charger
- Compatible with all V-mount plates
- 5-pin connector allows communication for camera and all other V-lock equipment



DLBCA2-V

V-Mount plate with belt loop, D-Tap output, and holding plate for DT2-(BI)-BAT power supply.

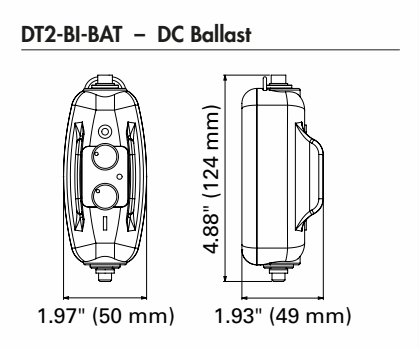
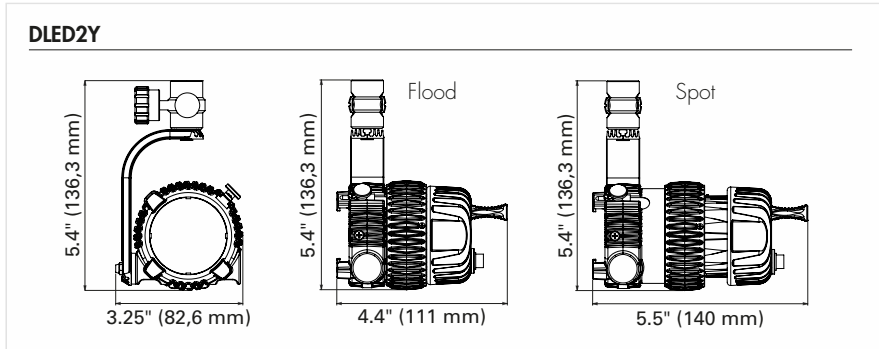
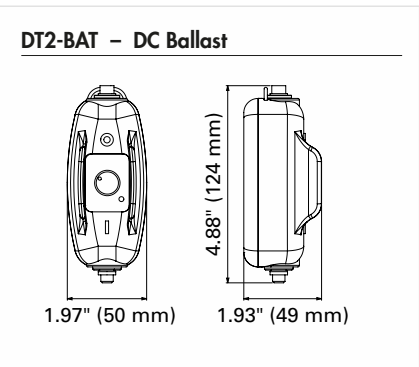
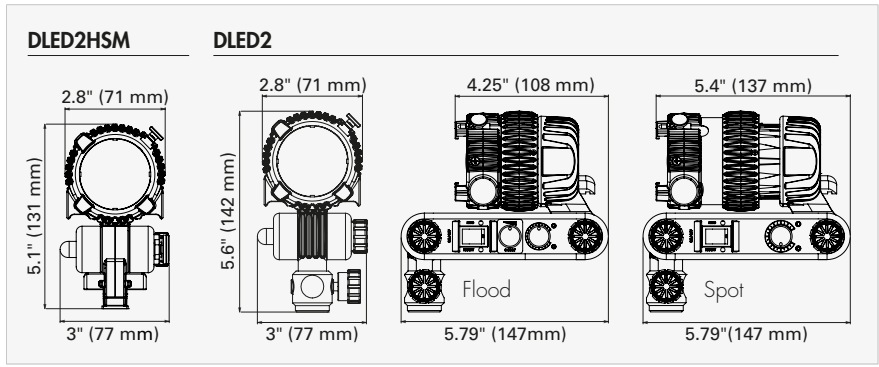
Note:
95Wh battery with integrated charger and V-Mount adapter can be used on a belt and also hung on the knob of a stand (loop). This device also serves to feed DLED4 in all its various versions (see following pages).



DLBCA2-NPF

Sony NPF plate with belt loop and holding plate for DT2-(BI)-BAT power supply.

DLED2 TECHNICAL DATA



FOCUSING LED LIGHT HEAD: DLED2-D, DLED2-BI	
Focus Range (Intensity Range)	50°-5° (1:7)
Focus Control	3/4 turn on focus ring
Power	25 W, 6-18VDC
Mounting	5/8" (16 mm) receptacle and 1 1/8" (28 mm) stud OR: optional with shoe mounting (e.g.: DLED2HSM-BI) OR: with yoke and separate power supply (e.g.: DLED2Y-BI)
Operating Position	Any, except electronics directly over light head
Tilt Control	Adjustable friction
Accessory Holder*	Ø 2.3" (58 mm)
Safety	Protection Class III, SELV, IP40
Cooling	Passive cooling (no fan)
UV	No UV radiation
Weight	1.8 lb (800g)
Size	W: 3" (77 mm) L (flood): 5.79" (147 mm) L (spot): 5.79" (147 mm) H: 5.6" (142 mm)
* for mounting the unique range of DLED2 front-end accessories	

DLED2-D Focusing LED Light Head. Daylight approx. 5600K

Distance	Meter	1	2	3	4	5
	Feet	3'	6'	9'	12'	15'
Flood	Lux	810	203	90	50	
	Foot Candle	75	19	8.3	4.6	
Medium	Lux	1,800	450	200	113	72
	Foot Candle	167	42	19	11	6.7
Spot	Lux	5,250	1,312	583	328	210
	Foot Candle	487	122	54	30	20

DLED2-BI Focusing LED Light Head. Bicolor measured at 5600K – daylight

Color temperature continuously adjustable from 2700 – 6500K

Distance	Meter	1	2	3	4	5
	Feet	3'	6'	9'	12'	15'
Flood	Lux	820	205	92	51	
	Foot Candle	76	19	8.6	4.8	
Medium	Lux	1,820	455	202	114	73
	Foot Candle	169	42	19	11	6.8
Spot	Lux	3,350	838	372	209	134
	Foot Candle	311	78	35	19	12

Bicolor in tungsten function ~ 25% lower output

DLED2 ACCESSORIES

Light Control



DBDS8

Standard 8-leaf barn door for DLED2 light head.

DBDS

Optional 8-leaf barn door with individually rotating barn door leaves



DPLSS

Light shield ring for DLED2 and DLED3 light heads



DLSR60

Speedring for DLED2 soft box

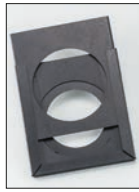


DLED2-SBX

Soft box for all DLED2 and DLED2Y light heads.



Imager



DP1S

Imager/projection attachment for gobos and background effect filters. Complete with 60mm lens and gobo holder.



DPGSETS

A set of 6 steel gobo patterns. Fits DP1S gobo holder.



DPIRS

Iris for DP1S imager.



DP2S

Imager/projection attachment with adjustable blades and 60mm lens.



Mounting Adapter



DLBSA-JSF

Adapter from 16 mm (5/8") receptacle to camera shoe mount. Fits DLED2HSM and DLED2YHSM light heads with camera shoe mount.



DLBSA-MBS

Adapter from camera shoe mount to 16 mm (5/8") receptacle. Fits DLED2 and DLED2Y light heads.

AC Power Supply



DLPS12-30

Mains power unit with connector set EU, USA, AUS, UK
If needed, the power feed between ballast and AC adapter DLPS12-30 can be elongated by extension cable DDCC-EXT5 (length 5 m (16.4 ft.))

This device works with all DLED2 light heads and DT2-(B)-BAT power supplies.



DDCC-EXT5

5 m (16.4') Mini Jack extension cable

DLED4 LED ASPHERICS²® OPTICS

A SUCCESS STORY GROWING FURTHER

- Perfect color in daylight and tungsten versions
- Expanded bicolor range:
A great gift for mobile work, tuning from 2700K all the way to above 6500K. Thus adapting to most ambient light situations without any filters. Easy fine-tuning for slightly warmer fill light or somewhat colder back light – separating the background illumination by subtle color choices.
- Dimming:
Proprietary dimming algorithms for smooth dimming, even at the low end

16-bit dimming for special studio demands as option
- AC and DC ballasts
- Battery operation:
High output – best efficiency – low power demands allow mobile teams to operate for hours, totally independent from AC power supplies. Belt clip holds battery (V-lock or AB), as well as the battery ballast and comes with a stand mounting loop.
- Studio versions also available as pole-operated and with DMX control
- Unique light-/shadow-shaping accessories – most of these are especially designed to cooperate with our highly developed optical system

Tools to modify the light and color character. Such tools are available for all sizes of our lights.

Our experienced and highly qualified R&D team is the best of all manufacturers of professional lighting equipment. With this extraordinary team we work continuously to improve color, light output, light character and the light-shaping accessories.

A completely new, parallel product range with active cooling is shown in a separate brochure: **DLED TURBO SERIES**.

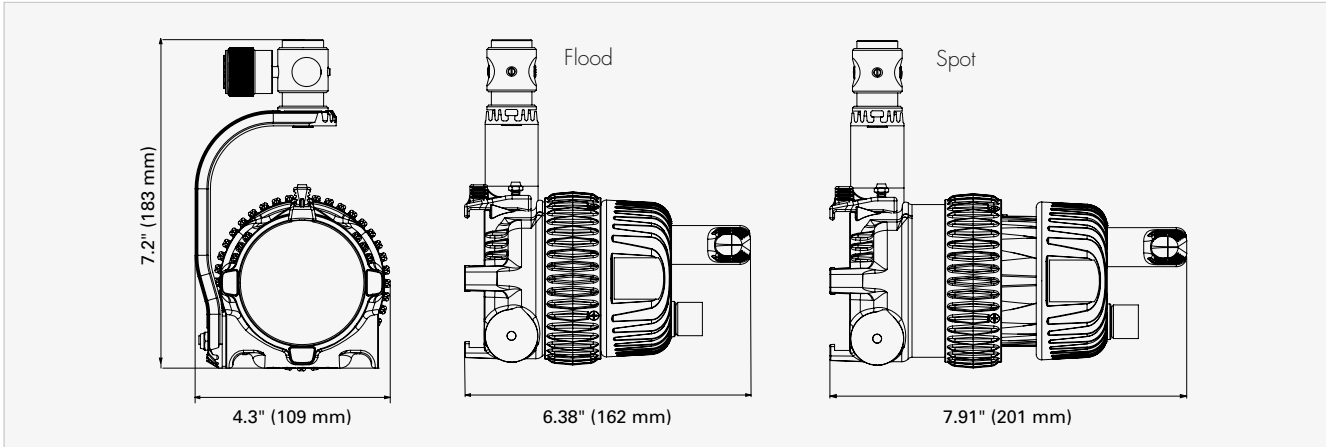


DLED4 TECHNICAL DATA

DLED4-D

DLED4-T

DLED4-BI



FOCUSING LED LIGHT HEAD: DLED4-D, DLED4-T, DLED4-BI

Focus Range (Intensity Range)	60-4° (1:20) with optional aspheric wide-angle attachment: 85-54°
Focus Control	One complete turn on focus ring
Power	40W
Mounting	5/8" (16 mm) receptacle and 1 1/8" (28 mm) stud
Operating Position	Any
Tilt Control	Permanent friction
Accessory Holder	3" (76 mm) diameter
Safety	Protection Class III, SELV, IP40
Cooling	Passive (no fan)
UV	No UV radiation
Weight	2.9 lb (1,300 g)
Size	W: 4.3" (109 mm) L (flood): 6.38" (162 mm) L (spot): 7.91" (201 mm) H: 7.2" (183 mm)

DLED4-D Focusing LED Light Head. Daylight approx. 5600K

Distance	Meter	1	2	3	4	5
	Feet	3'	6'	9'	12'	15'
Flood	Lux	1,500	375	167	94	60
	Foot Candle	139	35	15	9	5.6
Medium	Lux	2,800	700	310	175	112
	Foot Candle	260	65	29	16	10.4
Spot	Lux	14,500	3,625	1,611	906	580
	Foot Candle	1348	337	150	84	54

DLED4-T Focusing LED Light Head. Tungsten approx. 3200K

Distance	Meter	1	2	3	4	5
	Feet	3'	6'	9'	12'	15'
Flood	Lux	1,360	340	151	85	54
	Foot Candle	126	32	14	8	5
Medium	Lux	2,250	563	250	141	90
	Foot Candle	209	53	23	13	8.4
Spot	Lux	12,200	3,050	1,356	763	488
	Foot Candle	1,134	284	126	71	45

DLED4-BI Focusing LED Light Head. Bicolor measured at 5600K – daylight

Color temperature continuously adjustable from 2700 – 6500K

Distance	Meter	1	2	3	4	5
	Feet	3'	6'	9'	12'	15'
Flood	Lux	1,580	395	176	99	63
	Foot Candle	147	37	16	9	6
Medium	Lux	2,850	713	317	178	114
	Foot Candle	265	66	30	17	11
Spot	Lux	12,100	3,025	1,344	756	484
	Foot Candle	1,125	281	125	70	45

Bicolor in tungsten function ~ 15 % lower output

AC POWER OPTIONS FOR DLED4



DAYLIGHT / TUNGSTEN

DT4 AC power supply for DLED4 tungsten and daylight light heads.

Allows worldwide use from 90 - 264 V AC 50/60 cycle plus continuous dimming.

Add suffix "-DMX" for above ballasts with DMX control (DT4-DMX).

The DC power supply DT4-BAT is much smaller and allows operation from any 10,2-18 V source.

BICOLOR

The DT4-BI, same as DT4 but with additional control for continuous change of color temperature from daylight to tungsten. Now with digital Kelvin value display.

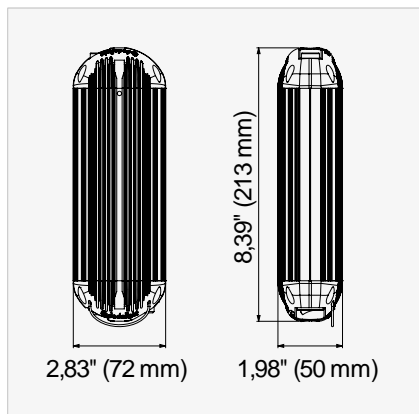
All bicolor ballasts for mobile use, which are used separately from the light head, work with a display, showing variations of color temperatures.

(example: C32 = color 3200 Kelvin and dimming status d50 = 50% intensity)

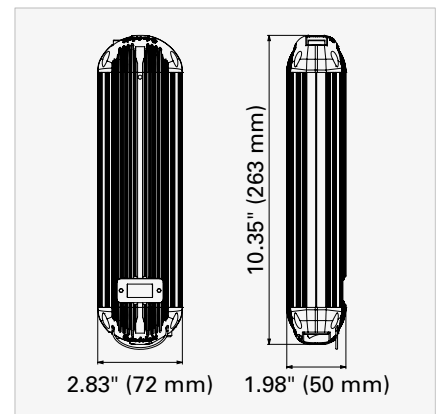
POWER SUPPLY FOR AC OPERATION: DT4, DT4-BI

Input Voltage	90 - 264 V AC * 50 VA / 0.5-0.21 A 47 W
Output Voltage	40V
Controls	ON/OFF switch, dimming knob
Dimming	Continuously from 100-0%
Safety	Protection Class I, IP40
Cable length (plug - > power supply)	Mains cable 8.2' / 2.5 m
Cable length (plug - > light head)	Cable to light head 4.6' / 1.4 m
Mounting	Cable loop
Weight	2.2lb / 1,000g

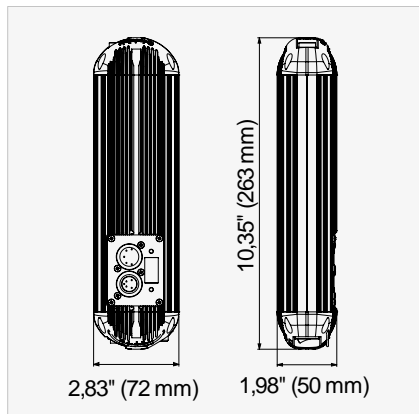
DT4



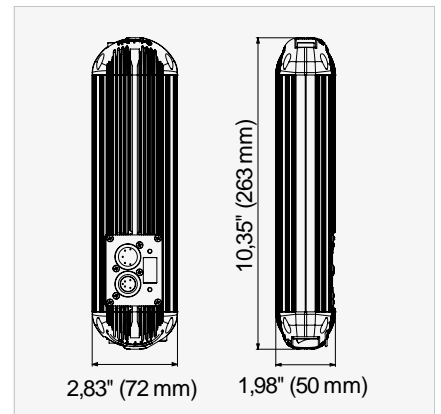
DT4-BI



DT4-DMX



DT4-BI-DMX



DTHC

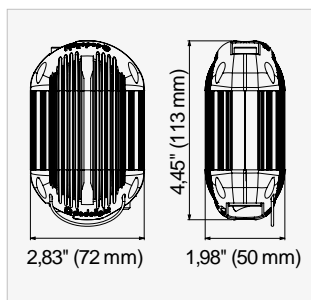
ballast holder
to mount LED ballasts to lighting stands.
Max. opening 25,4 mm (1")



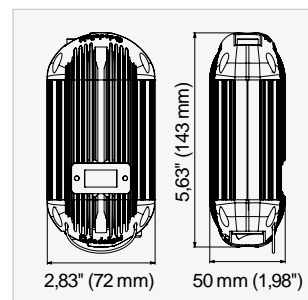
AC/DC POWER OPTIONS FOR DLED4

NEW DT4-BAT / DT4-BI-BAT POWER SUPPLY FOR AC & DC USE

DT4-BAT



DT4-BI-BAT



New Mini Jack socket at bottom end of DT4-BAT and DT4-BI-BAT. 10,8 – 18 V DC input.



DC USE WITH DT4-(BI-)BAT



DT4-BAT

power supply

DDCC-DTAPS

short D-Tap cable, 28 cm (11")

option:

DLBCA2-V

belt clip for V-Mount batteries

DS-95SI

14,4 V battery, 95 Wh

DDCC-CAR

adapter cable to car cigarette lighter

DDCC-DTAPL

long D-Tap cable, 55 cm (1.8')

DDCC - cables mentioned on page 31

AC USE WITH DT4-(BI-)BAT



DT4-BI-BAT

power supply

DLPS12-60

12 V power supply, 60 W, with Mini Jack

option:

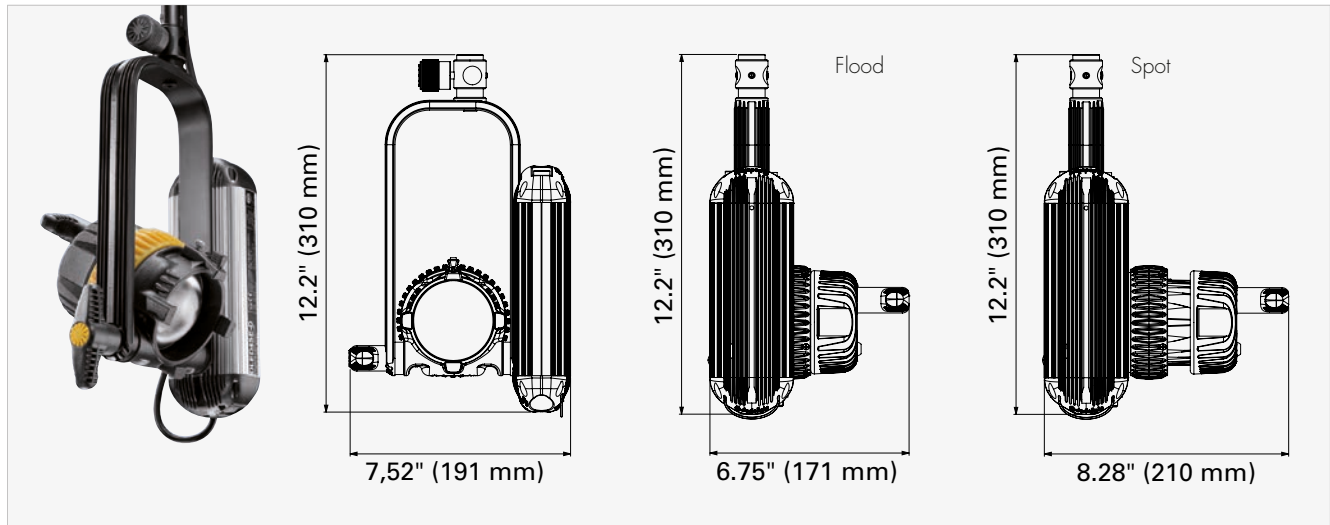
DDCC-EXT5

5 m (16.4') Mini Jack extension cable

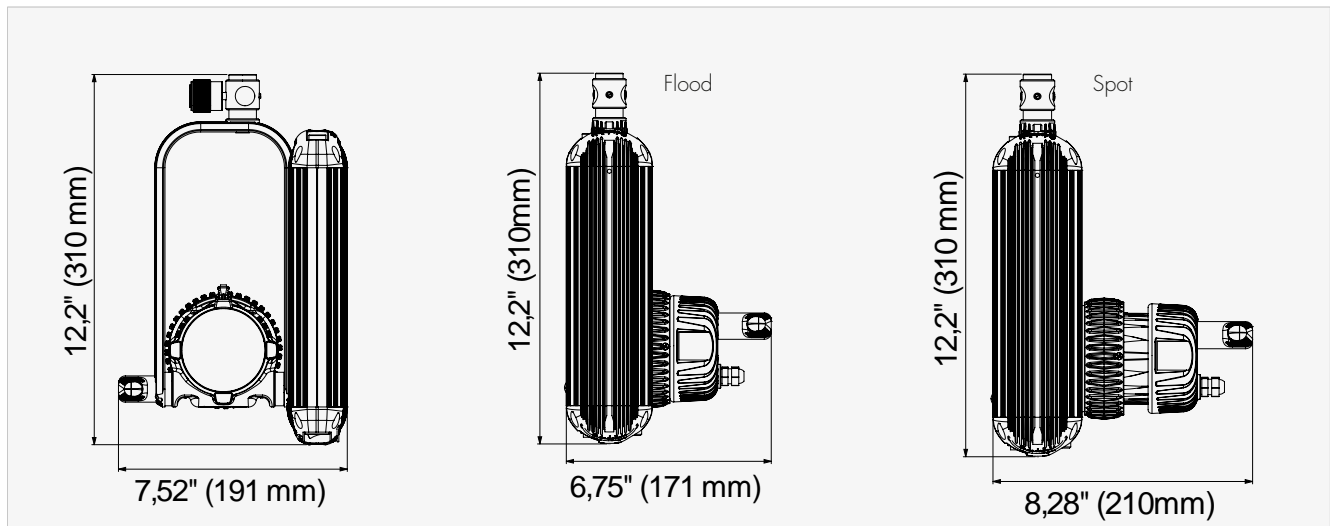


DLED4SE - STUDIO EDITION TECHNICAL DATA

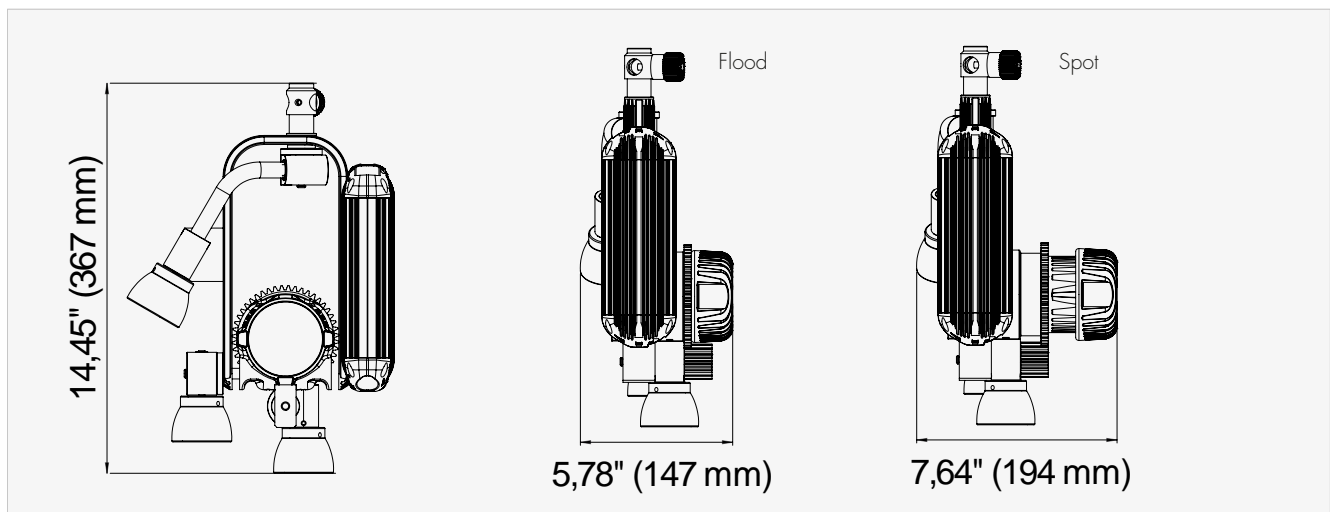
DLED4SE-D **DLED4SE-T**



DLED4SE-BI **DLED4SE-D-DMX** **DLED4SE-T-DMX** **DLED4SE-BI-DMX**



DLED4SE-D-PO pole operated **DLED4SE-T-PO pole operated**



NEW: DLED4/FELLONI KITS

DLED4 1 LIGHT KIT – WITH SOFT CASE

SLED1-BI-B

SLED1-BI-B 1 Light Kit	Bicolor - Basic AC/DC operation
1 DLED4-BI	dedolight focusing LED light head, bicolor
1 DT4-BI-BAT	Battery power supply for DLED4 bicolor light heads
1 DDCC-DTAPS	Short D-Tap cable, 28 cm (11")
1 DLPS12-60	12 V power supply, 60 W
1 DPLS	Light shield ring
1 DBD8	Standard barn door (eight leaves)
1 DLHAND	dedolight handle
1 DS-95SI	14,4V battery with internal charger and charge cable
1 DLBCA2-V	Belt adapter for V-Mount batteries with holding plate for DT4(-BI)-BAT power supplies. D-Tap power out socket.
1 DSCM	Soft case, mono
Size:	28 x 17 x 25 cm (11 x 6.7 x 10")
Weight:	4.8 kg (10.6 lbs)

SLED1-D-B

SLED1-D-B 1 Light Kit	Daylight - Basic AC/DC operation
Same as SLED1-BI-B, but as 40 W daylight system with DLED4-D and DT4-BAT power supply instead of bicolor units.	



DLED4 1 LIGHT KIT – WITH SOFT CASE

SLED1-BI-M

SLED1-BI-M 1 Light Kit	Bicolor - Master AC/DC operation
<i>(items in bold are in addition to BASIC kit)</i>	
1 DLED4-BI	dedolight focusing LED light head, bicolor
1 DT4-BI-BAT	Battery power supply for DLED4 bicolor light heads
1 DDCC-DTAPS	Short D-Tap cable, 28 cm (11")
1 DLPS12-60	12 V power supply, 60 W
1 DPLS	Light shield ring
1 DBD8	Standard barn door (eight leaves)
1 DLHAND	dedolight handle
1 DLSR70	Speed ring for Classic Series and DLED4 light heads
1 DSBSXS	dedoflex mini soft box - 30x30x23cm (12x12x9")
1 DLGRIDXS	Grid (40°), fits mini soft box
1 DS-95SI	14,4V battery with internal charger and charge cable
1 DLBCA2-V	Belt adapter for V-Mount batteries with holding plate for DT4(-BI)-BAT power supplies. D-Tap power out socket
1 DSCM2	Soft case, mono
Size:	35 x 21 x 28 cm (13.8 x 8.3 x 11")
Weight:	5.2 kg (11.5 lbs)

SLED1-D-M

SLED1-D-M 1 Light Kit	Daylight - Master AC/DC operation
Same as SLED1-BI-M, but as 40 W daylight system with DLED4-D and DT4-BAT power supply instead of bicolor units.	



DLED4/FELLONI (2x1) 3 LIGHT KIT – WITH BACK PACK

BLED2x1-BI-B

BLED2x1-BI-B 3 Light Kit	Bicolor - Basic (2x DLED4/1x Felloni) AC, mains operation only
2 DLED4-BI	dedolight focusing LED light head, bicolor
2 DT4-BI	AC power supply for DLED4 bicolor light heads
2 DPLS	Light shield ring
2 DBD8	Standard barn door (eight leaves)
1 TP-LONI3-BIHO	Felloni3 LED panel bicolor high output 45°
1 TP-SBX50	Felloni soft box 50x50cm
1 TP-SBXG50	Felloni textile grid for soft box
1 TP-OFFSET	Offset arm for Felloni when used with onboard batteries
3 DST	dedolight stands
1 DBPSLED	Backpack, small, with dividers for Felloni panel

Size: 60 x 50 x 30 cm (24 x 20 x 12")
Weight: 20.0 kg (44.1 lbs)

BLED2x1-D-B

BLED2x1-D-B 3 Light Kit	Daylight - Basic (2x DLED4/1x Felloni) AC, mains operation only
-----------------------------------	---

Same as BLED2x1-BI-B, but as 40 W daylight system with DLED4-D, DT4 power supplies and Felloni daylight panel instead of bicolor units.



BLED2x1-BI-S

BLED2x1-BI-S 3 Light Kit	Bicolor - Standard (2x DLED4/1x Felloni) AC, mains operation only
------------------------------------	---

(items in **bold** are in addition to **BASIC** kit)

2 DLED4-BI	dedolight focusing LED light head, bicolor
2 DT4-BI-BAT	Battery power supply for DLED4 bicolor light heads
2 DDCC-DTAPS	Short D-Tap cable, 28 cm (11")
2 DLPS12-60	12 V power supply, 60 W
2 DPLS	Light shield ring
2 DBD8	Standard barn door (eight leaves)
1 DP1.1	Imager projection attachment
1 DPGH	Steel gobo holder (size ,M')
1 DPGSET	Gobo set (six popular steel gobos, size ,M')
2 DFH	Gel filter holder
1 DGW	Gel filter set, warm tone (fits DFH filter holder)
1 DGMD	Gel filter set, mixed diffusion (fits DFH filter holder)
1 DGCOL	Gel filter set, color effect (fits DFH filter holder)
1 TP-LONI3-BIHO	Felloni3 LED panel bicolor high output 45°
1 TP-SBX50	Felloni soft box 50x50cm
1 TP-SBXG50	Felloni textile grid for soft box
1 TP-OFFSET	Offset arm for Felloni when used with onboard batteries
3 DST	dedolight stands
1 DH2	Wall holder
1 CLAMP1	dedolight clamp
1 DBPSLED	Backpack, small, with dividers for Felloni panel

Size: 60 x 50 x 30 cm (24 x 20 x 12")
Weight: 16.6 kg (36.6 lbs)

BLED2x1-D-S

BLED2x1-D-S 3 Light Kit	Daylight - Standard (2x DLED4/1x Felloni) AC, mains operation only
-----------------------------------	--

Same as BLED2x1-BI-S, but as 40 W daylight system with DLED4-D, DT4-BAT power supplies and Felloni daylight panel instead of bicolor units.



DLED4/FELLONI (2x2) 4 LIGHT KIT - WITH SOFT CASE

SLED2x2-BI-B

■ SLED2x2-BI-B 4 Light Kit	Bicolor - Basic (2x DLED4/2x Felloni) AC, mains operation only
2 DLED4-BI	dedolight focusing LED light head, bicolor
2 DT4-BI	AC power supply for DLED4 bicolor light heads
2 DPLS	Light shield ring
2 DBD8	Standard barn door (eight leaves)
1 DP1.1	Imager projection attachment
1 DPGH	Steel gobo holder (size ,M')
1 DPGSET	Gobo set (six popular steel gobos, size ,M')
1 DPACP	Accessory Pouch
2 TP-LONI3-BIHO	Felloni3 LED panel bicolor high output 45°
2 TP-SBX50	Felloni soft box 50x50cm
2 TP-SBXG50	Felloni textile grid for soft box
1 TPOFFSET	Offset arm for Felloni when used with onboard batteries
1 DSCLED2x2	Soft case for 2x Felloni / 2x DLED4
1 SDST4	Stand kit with 4x DST and soft bag
Size DSCLED2x2:	56 x 48 x 32 cm (22" x 18.9" x 12.6")
Weight:	16.8 kg (37 lbs)
Size SDST4:	55 x 17 x 18 cm (21.7 x 6.7 x 7.1")
Weight:	4.2 kg (9.3 lbs)

SLED2x2-D-B

■ SLED2x2-D-B 4 Light Kit	Daylight - Basic (2x DLED4/2x Felloni) AC, mains operation only
Same as SLED2x2-BI-B, but as 40 W daylight system with DLED4-D, DT4 power supplies and Felloni daylight panels instead of bicolor units.	



SLED2x2-BI-M

■ SLED2x2-BI-M 4 Light Kit	Bicolor - Master (2x DLED4/2x Felloni) AC/DC, mains and battery operation
(items in bold are in addition to BASIC kit)	
2 DLED4-BI	dedolight focusing LED light head, bicolor
2 DT4-BI	AC power supply for DLED4 bicolor light heads
2 DPLS	Light shield ring
2 DBD8	Standard barn door (eight leaves)
1 DP1.1	Imager projection attachment
1 DPGH	Steel gobo holder (size ,M')
1 DPGSET	Gobo set (six popular steel gobos, size ,M')
1 DPACP	Accessory Pouch
2 TP-LONI3-BIHO	Felloni3 LED panel bicolor high output 45°
2 TP-SBX50	Felloni soft box 50x50cm
2 TP-SBXG50	Felloni textile grid for soft box
1 TPOFFSET	Offset arm for Felloni when used with onboard batteries
1 DSCLED2x2	Soft case for 2x Felloni / 2x DLED4
1 SDST4	Stand kit with 4x DST and soft bag
2 DT4-BI-BAT	Battery power supply for DLED4 bicolor light heads
2 DDCC-DTAPS	Short D-Tap cable, 28 cm (11")
2 DIPS12-60	12 V power supply, 60 W
4 DS-95SI	14,4V batteries with internal charger and charge cable
2 DLBCA2-V	Belt adapter for V-Mount batteries with holding plate for DT4(-BI)-BAT power supplies. D-Tap power out socket.
2 DFH	Gel filter holder
1 DGW	Gel filter set, warm tone (fits DFH filter holder)
1 DGMD	Gel filter set, mixed diffusion (fits DFH filter holder)
1 DGCOL	Gel filter set, color effect (fits DFH filter holder)
1 DSCS	Soft case, small

SLED2x2-D-M

■ SLED2x2-D-M 4 Light Kit	Daylight - Master (2x DLED4/2x Felloni) AC/DC, mains and battery operation
Same as SLED2x2-BI-M, but as 40 W daylight system with DLED4-D, DT4, DT4-BAT power supplies and Felloni daylight panels instead of bicolor units.	
Size DSCLED2x2:	56 x 48 x 32 cm (22" x 18.9" x 12.6")
Weight:	16.8 kg (37 lbs)
Size SDST4:	55 x 17 x 18 cm (21.7 x 6.7 x 7.1")
Weight:	4.2 kg (9.3 lbs)
Size DSCS:	53 x 24 x 23 (20.9" x 9.5" x 9.1")
Weight:	8.4 kg (18.5 lbs)



DLED4 3 LIGHT KIT – WITH SOFT CASE

SLED3-BI-B

SLED3-BI-B 3 Light Kit

Bicolor - Basic
mains operation only

- 3 DLED4-BI dedolight focusing LED light head, bicolor
- 3 DT4-BI AC Power supply for DLED4 bicolor light heads
- 3 DPLS Light shield ring
- 3 DBD8 Standard barn door (eight leaves)
- 1 DLSR70 Speed ring for Classic Series and DLED4 light heads
- 1 DSBSXS dedoflex mini soft box - 30x30x23cm (12x12x9")
- 1 DLGRIDXS Grid (40°), fits mini soft box
- 3 DST dedolight stands
- 1 DSC1 Soft case small

Size: 65 x 24 x 36 cm (25.6 x 9.5 x 14.2")
Weight: 13.7 kg (30.2 lbs)

SLED3-D-B

SLED3-D-B 3 Light Kit

Daylight - Basic
mains operation only

Same as SLED3-BI-B, but as 40 W daylight system with DLED4-D and DT4 power supplies instead of bicolor units.



SLED3-BI-M

SLED3-BI-M 3 Light Kit

Bicolor - Master
AC/DC, mains and battery operation

(items in **bold** are in addition to **BASIC** kit)

- 3 DLED4-BI dedolight focusing LED light head, bicolor
- 3 **DT4-BI-BAT** **Battery power supply for DLED4 bicolor light heads with Kelvin display**
- 3 **DDCC-DTAPS** **Short D-Tap cable, 28 cm (11")**
- 3 **DLPS12-60** **12 V power supply, 60 W**
- 3 DPLS Light shield ring
- 3 DBD8 Standard barn door (eight leaves)
- 1 DLSR70 Speed ring for Classic Series and DLED4 light heads
- 1 DSBSXS dedoflex mini soft box - 30x30x23cm (12x12x9")
- 1 DLGRIDXS Grid (40°), fits mini soft box
- 1 **DP1.1** **Imager projection attachment**
- 1 **DPGH** **Steel gobo holder (size ,M')**
- 1 **DPGSET** **Gobo set (six popular steel gobos, size ,M')**
- 1 **DFXSET** **Set of three structur glass filters with holders**
- 1 **DFXSET** **DFXT6-R / DFXT10-LB / DFXT11-P**
- 1 **DPACP** **Accessory pouch**
- 3 **DFH** **Gel filter holder**
- 1 **DGW** **Gel filter set, warm tone (fits DFH filter holder)**
- 1 **DGMD** **Gel filter set, mixed diffusion (fits DFH filter holder)**
- 1 **DGCOL** **Gel filter set, color effect (fits DFH filter holder)**
- 3 **DS-95SI** **14,4V batteries with internal charger and charge cable**
- 3 DLBCA2-V Belt adapter for V-Mount batteries with holding plate for DT4(BI)-BAT power supplies.
- 3 DST dedolight stands
- 1 DSC2 Soft case medium

Size: 83 x 30 x 33 cm (32.7 x 11.8 x 13")
Weight: 21.5 kg (47.4 lbs)

SLED3-D-M

SLED3-D-M 3 Light Kit

Daylight - Master
AC/DC, mains and battery operation

Same as SLED3-BI-M, but as 40 W daylight system with DLED4-D, DT4 and DT4-BAT power supplies instead of bicolor units.



DLED4 4 LIGHT KIT – WITH SOFT CASE

SLED4-BI-B

SLED4-BI-B 4 Light Kit	Bicolor - Basic AC, mains operation only
4 DLED4-BI	dedolight focusing LED light head, bicolor
4 DT4-BI	AC Power supply for DLED4 bicolor light heads
4 DPLS	Light shield ring
4 DBD8	Standard barn door (eight leaves)
2 DLSR70	Speed ring for Classic Series and DLED4 light heads
2 DSBSXS	dedoflex mini soft box - 30x30x23cm (12x12x9")
2 DLGRIDXS	Grid (40°), fits mini soft box
1 DP1.1	Imager projection attachment
1 DPGH	Steel gobo holder (size ,M')
1 DPGSET	Gobo set (six popular steel gobos, size ,M')
1 DH2	wall holder
1 CLAMP1	dedolight clamp
4 DST	dedolight stands
1 DSC2	Soft case medium

Size: 83 x 30 x 33 cm (32.7 x 11.8 x 13")
Weight: 19.9 kg (43.9 lbs)

SLED4-D-B

SLED4-D-B 4 Light Kit	Daylight - Basic AC, mains operation only
Same as above, but as 40 W daylight system with DLED4-D and DT4 power supplies instead of bicolor units.	



SLED4-BI-M

SLED4-BI-M 4 Light Kit	Bicolor - Master AC/DC, mains and battery operation
(items in bold are in addition to BASIC kit)	
4 DLED4-BI	dedolight focusing LED light head, bicolor
4 DT4-BI-BAT	Battery power supply for DLED4 bicolor light heads with Kelvin display
4 DDCC-DTAPS	Short D-Tap cable, 28 cm (11")
4 DLPS12-60	12 V power supply, 60 W
4 DPLS	Light shield ring
4 DBD8	Standard barn door (eight leaves)
2 DLSR70	Speed ring for Classic Series and DLED4 light heads
2 DSBSXS	dedoflex mini soft box - 30x30x23cm (12x12x9")
2 DLGRIDXS	Grid (40°), fits mini soft box
1 DP1.1	Imager projection attachment
1 DPGH	Steel gobo holder (size ,M')
1 DPGSET	Gobo set (six popular steel gobos, size ,M')
1 DFXSET	Set of three structur glass filters with holders DFXT6-R / DFXT10-LB / DFXT11-P
1 DPACP	Accessory pouch
4 DFH	Gel filter holder
1 DGW	Gel filter set, warm tone (fits DFH filter holder)
1 DGMD	Gel filter set, mixed diffusion (fits DFH filter holder)
1 DGCOL	Gel filter set, color effect (fits DFH filter holder)
4 DS-95SI	14,4V batteries with internal charger and charge cable
4 DLBCA2-V	Belt adapter for V-Mount batteries with holding plate for DT4(-BI)-BAT power supplies. D-Tap power out socket.
1 DH2	Wall holder
1 CLAMP1	dedolight clamp
4 DST	dedolight stands
1 DSCXLW	Soft case large, with wheels

Size: 94 x 30 x 38 cm (37 x 11.8 x 14.9")
Weight: 26.8 kg (59.1 lbs)

SLED4-D-M

SLED4-D-M 4 Light Kit	Daylight - Master AC/DC, mains and battery operation
Same as SLED4-BI-M, but as 40 W daylight system with DLED4-D, DT4, DT4-BAT power supplies instead of bicolor units.	



DLED9 LED LIGHT HEAD ASPHERICS²® OPTICS



The exceptional dedolight DLED9 combines the unique dedolight double aspheric optical system with state-of-the-art dedocolor® LED light sources. This light head is available in daylight, tungsten and a tunable bicolor version. Accepts all of the accessories and projection attachment/imagers which are identical to the ones in our Series 400 lighting fixtures (DLH400DT and DLH650).

The DLED9 offers an astounding focusing range, excellent light and color distribution, with perfect color rendering qualities.

The power supply for this light works with all voltages from 90 - 264 V AC, and it allows continuous dimming without any color change.



For studio use, a pole-operated version is available and/or DMX controlled. For mobile use, this light comes with separate ballast.

NEW (in separate catalog)

- DLED10, our new powerful flagship light, daylight or bicolor, mobile or studio.
- DLED30, our most powerful LED studio light

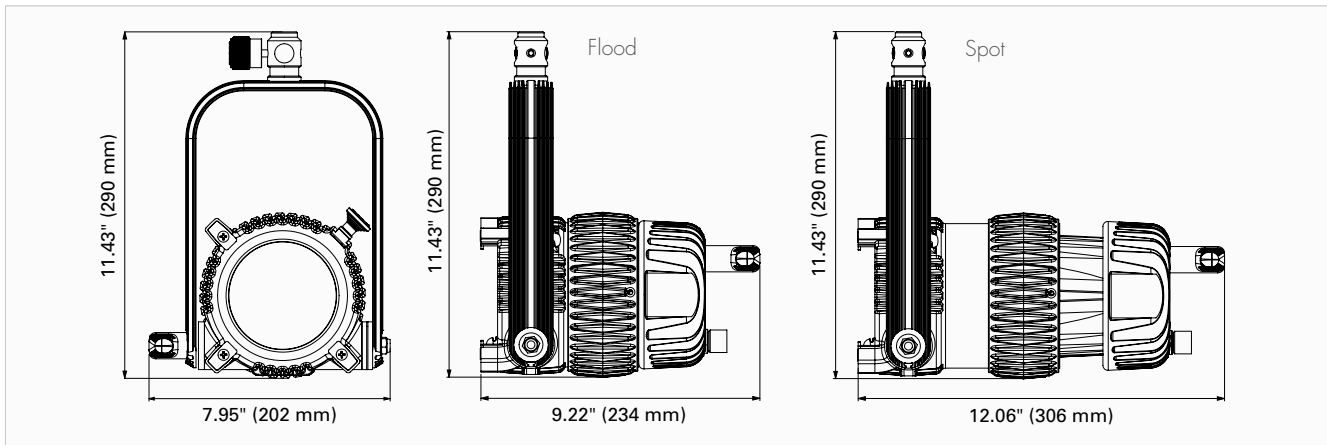


DLED9 TECHNICAL DATA

DLED9-D

DLED9-T

DLED9-BI



FOCUSING LED LIGHT HEAD: DLED9-D, DLED9-T, DLED9-BI

Focus Range (Intensity Range)	50-4° (1:12) with optional aspheric wide-angle attachment: 75°-44°
Focus Control	Two complete turns on focus ring
Power	90W
Mounting	5/8" (16 mm) receptacle and 1 1/8" (28 mm) stud
Operating Position	Any
Tilt Control	Permanent friction
Accessory Holder	Ø 5.1" (129 mm)
Safety	Protection Class III, SELV, IP40
Cooling	Passive cooling (no fan)
UV	No UV radiation
Weight	8.2 lb (3,700g)
Size	W: 7.95" (202 mm) L (flood): 9.22" (234 mm) L (spot): 12.06" (306 mm) H: 11.43" (290 mm)

DLED9-D Focusing LED Light Head. Daylight approx. 5600K

Distance	Meter	1	2	3	4	5	10
	Feet	3'	6'	9'	12'	15'	30'
Flood	Lux	5,080	1,270	565	318	203	51
	Foot Candle	472	118	53	30	19	5
Medium	Lux	6,600	1,650	733	413	264	66
	Foot Candle	613	153	68	38	25	5.6
Spot	Lux	60,000	15,000	6,666	3,750	2,400	600
	Foot Candle	5,576	1,394	620	349	223	56

DLED9-T Focusing LED Light Head. Tungsten approx. 3200K

Distance	Meter	1	2	3	4	5	10
	Feet	3'	6'	9'	12'	15'	30'
Flood	Lux	3,860	965	429	241	154	39
	Foot Candle	359	90	40	22	14	4
Medium	Lux	5,680	1,420	631	355	227	57
	Foot Candle	528	132	59	33	21	5.3
Spot	Lux	40,800	10,200	4,533	2,550	1,632	408
	Foot Candle	3,792	948	421	237	152	38

DLED9-BI Focusing LED Light Head. Bicolor measured at 5600K – daylight

Color temperature continuously adjustable from 2700 – 6500K

Distance	Meter	1	2	3	4	5	10
	Feet	3'	6'	9'	12'	15'	30'
Flood	Lux	5,050	1,263	561	316	202	50
	Foot Candle	469	117	52	29	19	4.7
Medium	Lux	6,565	1,591	729	410	263	65
	Foot Candle	610	153	68	38	24	6
Spot	Lux	43,000	10,750	4,777	2,688	1,720	430
	Foot Candle	3,996	999	444	250	160	40

Bicolor in tungsten function ~ 25 % lower output

AC POWER OPTIONS FOR DLED9

DT9 – AC power supply for DLED9 tungsten and daylight light heads.

DT9-BI – AC power supply for DLED9-BI bicolor light head

Allows worldwide use from 90V-264V AC* 50/60Hz

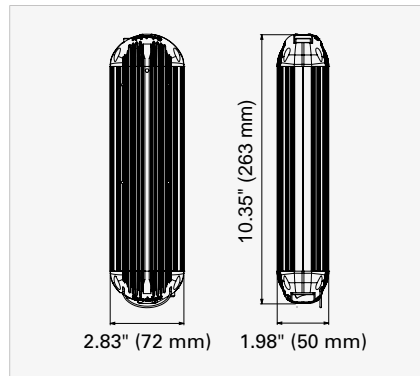
Continuous dimming with unique dedolight dimming algorithms allow smooth dimming, even at the low end

Add suffix “-DMX” for above ballasts with DMX control (DT9-DMX)

Battery power supplies for DLED9 light heads with 11-36V DC power input.

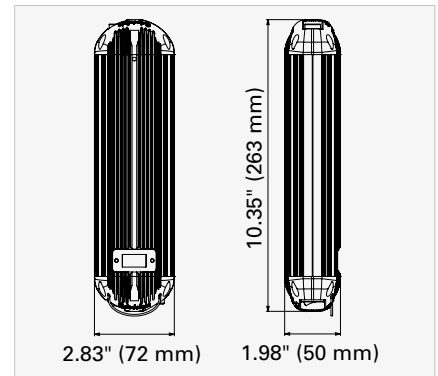
DAYLIGHT / TUNGSTEN

DT9

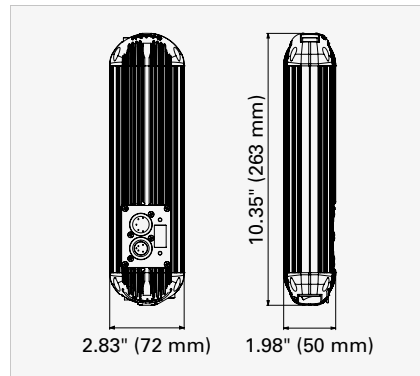


BICOLOR

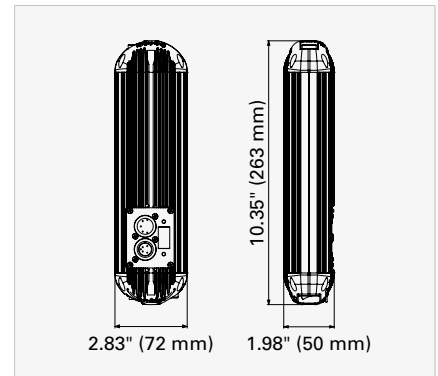
DT9-BI



DT9-DMX



DT9-BI-DMX



POWER SUPPLY FOR AC OPERATION: DT9, DT9-BI

Input Voltage	90 - 264 V AC * 100 VA / 1 - 0.4 A 90 W
Output Voltage	40 V
Controls	ON/OFF switch, dimming knob
Dimming	Continuously from 100-0%
Safety	Protection Class I, IP40
Cable length (plug -> power supply)	Mains cable 8.2'/2.5 m
Cable length (plug -> light head)	Cable to light head 4.6'/1.4 m
Mounting	Cable loop
Weight	3.1 lb (1,400 g)

*] functional range including tolerances

DTHC

€ 73,50

ballast holder to mount LED ballasts to lighting stands. Max. opening 25,4 mm (1")



DLED9SE for Pole-Operation with DMX

